

About Transport Layer Security (TLS)

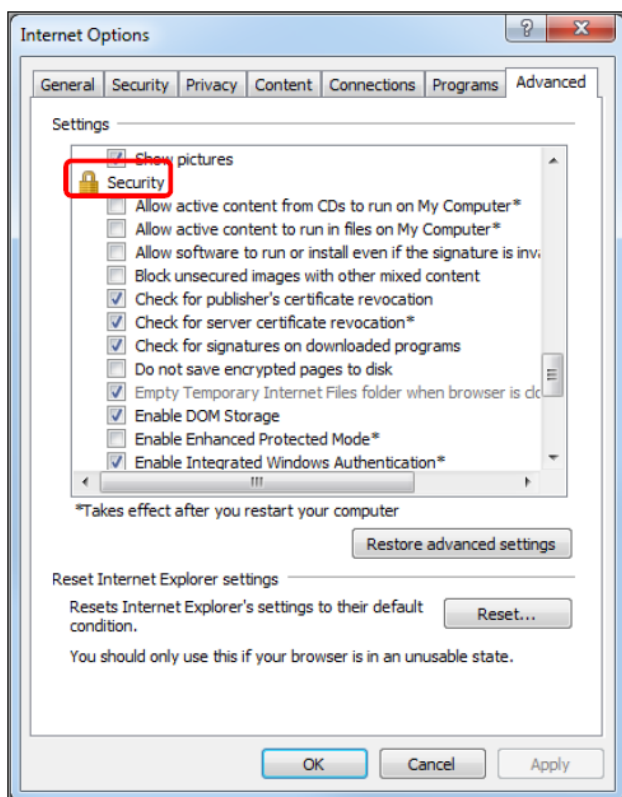
Transport Layer Security (TLS) is a protocol that ensures that a connection to a remote endpoint is securely encrypted in order to provide privacy and data integrity. Fiserv web applications and application programming interface (API) connections use TLS as a key component of their security. TLS 1.2 is the most current version and is considered to be the most secure. TLS 1.0 and 1.1 are earlier, now less secure versions.

Below is a basic TLS 1.2 compatibility chart. [Click here for a full list.](#)

| Browsers and Operating Systems | TLS 1.2 Compatibility Notes |
|---|--|
| Microsoft Edge | Compatible by default |
| Microsoft IE Desktop and mobile version 11 | Compatible by default |
| Microsoft IE Desktop versions 9 and 10 | Capable when run in Windows 7 or newer, but not enabled by default |
| Firefox 27 and higher | Compatible by default |
| Google Chrome 38 and higher | Compatible by default |
| Oracle Java version 1.7 and higher | Compatible by default |
| Mobile safari versions 5 and higher | Compatible by default |
| Mobile safari versions 5 and higher | Compatible by default |
| Microsoft Windows Server 2008 R2 and higher | Compatible by default |
| Microsoft Windows Server 2008 and below | Not compatible with TLS 1.2 |
| Microsoft Windows 7, 8.0, 8.1, and 10 | Compatible by default |
| Microsoft XP/Vista and below | Not compatible with TLS 1.2 |

How to Enable Transport Layer Security (TLS) 1.2

1. From your internet browser, select **Tools**, then **Internet Options**.
2. Click the **Advanced Tab**, and scroll down to Security section



3. Ensure TLS 1.2 is checked, if not check **TLS 1.2** and select, **Apply**, **OK**.

